

# JB9000

Junction box for use with electric heat tracing systems

# JUNCTION BOX

- Available for use in safe and hazardous areas
- SIRA certified: EExe II T6 SCS No. Ex 94C3025
- All boxes suitable for use with all styles of heating cable
- Manufactured in accordance with EN50 019, BS 5501 : Part 6
- Complete range of boxes & terminal
- IP66 rated

## INTRODUCTION

Heat Trace supply quality junction boxes only as part as a complete Heat Trace System. As standard, robust and corrosion resistant polyamide enclosures are supplied for use in safe (non-hazardous) or hazardous (Zone 1, or Zone 2) areas.

When used in hazardous areas the enclosures provide type EExe protection (increased safety) as per British Standard BS5501 Part 6 and CENELEC Standard EN50019:2000 "Electrical Apparatus for Potentially Explosive Atmospheres".

The boxes, as part of the overall Heat Trace System, also meet the requirements of IEC62395 – Electric Heat Tracing for Safe Industrial Locations and IEC60079-30 – Electric Heat Tracing for Hazardous Locations (formerly IEC62086).



## SPECIFICATION

**AMBIENT TEMPERATURE** -40°C to +50°C  
(-40°F to +212°F)

**MINIMUM OPERATING TEMPERATURE** -65°C\* (-85°F)

**EARTH CONTINUITY PLATE** Available as extra

### ENTRIES

Standard entries are 20mm and 25mm ISO metric.  
Alternatives upon request are: ¾" and 1" B.S. Conduit,  
Pg11, 13.5, 16 and 21, ½" and ¾" N.P.T.

### TERMINAL BLOCKS



Weidmuller - Klippon Terminals

TYPE	WIRE CAPACITY mm <sup>2</sup>		MAXIMUM RATINGS		
	MIN	MAX	VOLTS	AMPS	QTY
SAK2.5	0.5	2.5	550	15	10
SAK4	0.5	4.0	550	15	8
SAK6N	0.5	6.0	550	18	6
SAK10	2.5	10	550	37	4
WDU2.5	0.22	2.5	726	15	8
BK3-BK8	0.5	4.0	275	21	1
MK6/3-4-6	0.5	6.0	418	18	1

Entelec Terminals



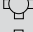


TYPE	WIRE CAPACITY mm <sup>2</sup>		MAXIMUM RATINGS		
	MIN	MAX	VOLTS	AMPS	QTY
MA2.5/5	0	2.5	380	15	10
M4/6	0	4.0	660	30	8

### APPROVAL DETAILS

Testing Authority	Certificate No.
ATEX 	Sira 03ATEX3398 Sira 03ATEX3582U
EAC* 	TC RU C-GB.ГБ05.B.00191

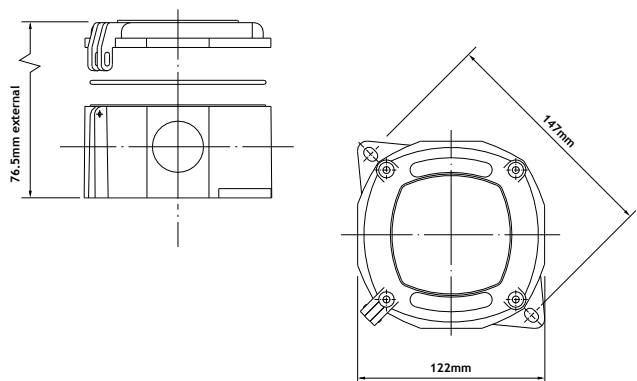
**APPROX VOLUME** 635cm<sup>3</sup>

**WEIGHT** 0.6kgs

		20mm	25mm
1 Way		9001	9051
2 Way		9002	9052
3 Way		9003	9053
4 Way		9004	9054
Angle		9005	9055

To order Enclosures with alternative entries, please give full description of requirements.

### DIMENSIONS



**MATERIAL** Glass reinforced Polyester,  
Fire Retardant

**FINISH** Matt Black

### SPECIAL FEATURE

The enclosure has a uniquely designed hinged cover that allows the unit to remain 'as one' during installation.

**FLUXO**